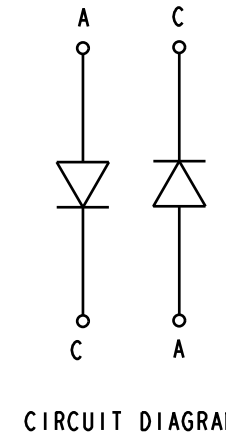
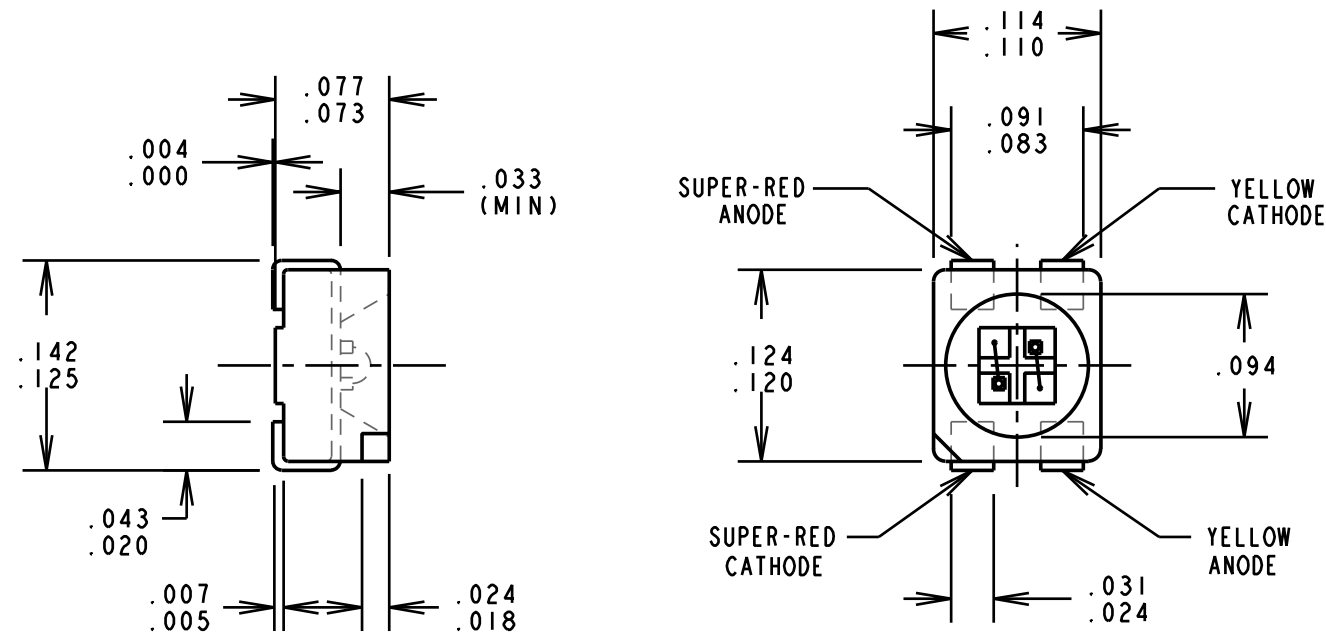


REV	ECN NO	REVISIONS	DRN	CKD	APP	QA	CM	DATE
A	—	NEW RELEASE	JMC					



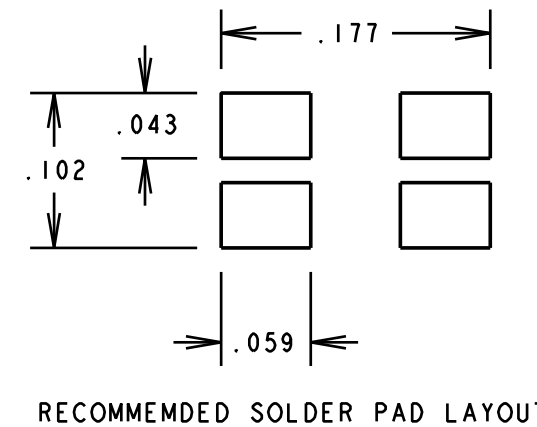
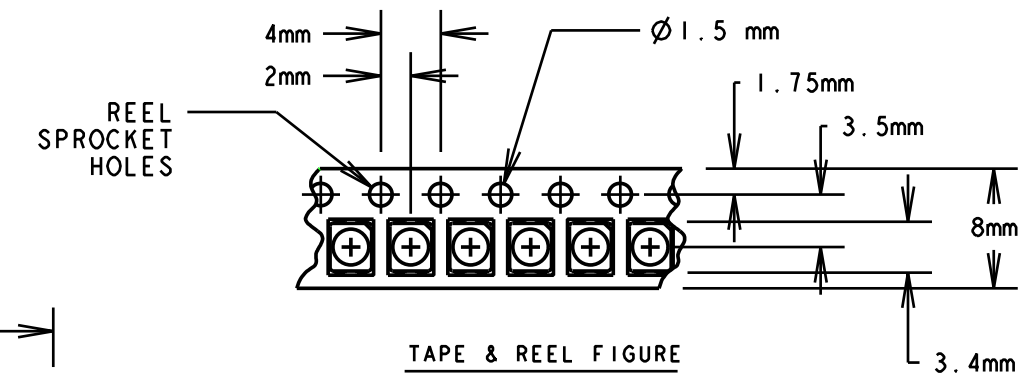
- NOTES:
1. EPOXY COLOR: WATER CLEAR
 2. DIE: GaAlP FOR SUPER RED AND FOR YELLOW
 3. LEADS : TIN(Sn) PLATED
 4. PARTS TO BE TAPED AND REELED PER EIA-RS-481A
 5. SUFFIX -202 FOR 20 PCS ON A SAMPLE TAPE STRIP
 6. SUFFIX -207 FOR 7" DIAMETER REEL, PACKAGED 2000 PCS PER REEL
 7. LABELING FOR REEL AND OUTSIDE OF ALUMINUM FOIL BAG:
DIALIGHT P/N, R/Y BICOLOR, QUANTITY PER REEL, DATE CODE,
INTENSITY BIN CODE, LOT NUMBER AND COUNTRY OF ORIGIN
 8. TAPE AND REEL LEDS MAY REQUIRE RE-TAPING AFTER TWELVE MONTHS
 9. DIALIGHT P/N: 597-7731-202, 597-7731-207
 10. MOISTURE SENSITIVITY LEVEL 2 LABEL ON MOISTURE BARRIER BAG PER JEDEC J-STD-033.

OPERATING CHARACTERISTICS AT 25°C AMBIENT

LED CHARACTERISTICS	COLOR	MIN.	TYP.	MAX.	UNITS	TEST CONDITIONS
LUMINOUS INTENSITY	SUPER-RED YELLOW	4.5 4.5		18 18	mcd	$I_F = 10 \text{ mA}$
FORWARD VOLTAGE	SUPER-RED YELLOW		2.0	2.5	V	$I_F = 10 \text{ mA}$
REVERSE CURRENT	SUPER-RED YELLOW		0.01	10	μA	$V_R = 12 \text{ V}$
PEAK WAVELENGTH	SUPER-RED YELLOW		635 586		nm	
2 X 1/2-INTENSITY ANGLE	SUPER-RED YELLOW		120		DEGREES	
DOMINANT WAVELENGTH	SUPER-RED	622	628	634	nm	
	YELLOW	584	590	596		

ABSOLUTE MAXIMUM RATINGS AT 25°C AMBIENT

POWER DISSIPATION	95 mW
CONTINUOUS FORWARD CURRENT	30 mA
DERATE LINEARLY FROM 55°C	0.66 mA/°C
PEAK FORWARD CURRENT ($t \leq 10 \mu\text{s}$)	0.5 A
PEAK REVERSE VOLTAGE	12V
SOLDERING PROFILE: (IR)240-245°C PEAK FOR 10-40 SEC; 183°C FOR 120-180 SEC MAX	
OPERATING TEMPERATURE	-40°C TO +100°C
STORAGE TEMPERATURE	-40°C TO +100°C



THIS DRAWING AND THE CONTENTS HEREIN ARE CONFIDENTIAL AND THE SOLE PROPERTY OF DIALIGHT. REPRODUCTION OF THIS DRAWING OR CONSTRUCTION OF ANY PARTS WITHIN THIS DRAWING ARE FORBIDDEN WITHOUT THE WRITTEN CONSENT OF DIALIGHT.

SCALE: DRAWING SCALE	DRAWING NUMBER	REV
ALL DIM'S IN: INCHES (MM)	C-17150	A
TOLERANCES: UNLESS OTHERWISE SPECIFIED	TITLE SUPER RED/YELLOW BICOLOR SMT	
FRACTIONS: $\pm 1/64$	MATERIAL	
DECIMALS (.XX): $\pm .01$	FINISH:	
DECIMALS (.XXX): $\pm .005$	FSCM 83330	
DECIMALS (.XXXX): $\pm .0005$	Dialight	
ANGLES: $\pm 1^\circ$	1501 ROUTE 34 SOUTH FARMINGDALE, NJ 07727	
	SHEET 1 OF 1	FAMILY TABLE: