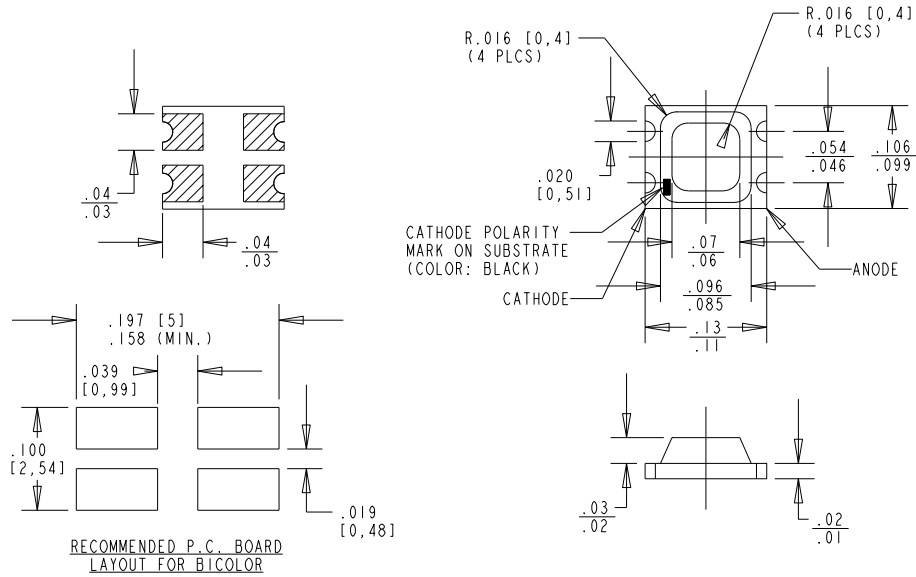


OPERATING CHARACTERISTICS AT 25 °C AMBIENT

DIALIGHT CATALOG P/N	COLOR	I _f (mA)	FORWARD VOLTAGE (V)		LUMINOUS INTENSITY (mcd)			REVERSE LEAKAGE CURRENT (μA)	PEAK WAVELENGTH (nm)	DOMINANT WAVELENGTH (nm)			LIGHT EMISSION ANGLE (DEGREES)	LED CHIP	REVISIONS			
			TYP.	MAX.	MIN.	TYP.	MAX.	MAX.		MIN.	TYP.	MAX.			REV.	ECN.	DRN.	DATE
597-3001-107	RED	20	2.0	2.6	1.6	4.0	6.4	10	630	613	620	625	170	GaAsP	C	—	YIS	2-19-03
597-3211-107	AMBER	20	2.1	2.8	3.0	8.0	13.0	10	610	600	605	610	180	GaAsP	B	—	YIS	2-19-03
597-3301-107	GREEN	20	2.0	2.6	6.0	12.0	22.0	10	565	562	565	572	170	GaP	D	—	YIS	2-19-03
597-3401-107	YELLOW	20	2.1	2.8	3.0	8.0	10.0	10	585	580	585	588	160	GaAsP	B	—	YIS	2-19-03

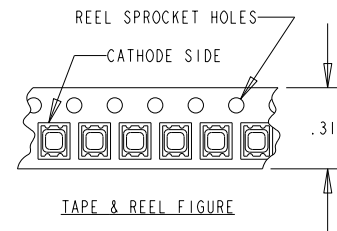
REV.	ECN NO.	REVISIONS	DRN.	CKD.	APP.	DATE
A	—	UPDATED LUMINOUS INTENSITY FOR 597-3301-107; -3401-107. ADDED DOMINANT WAVELENGTH COLUMN.	YIS			



NOTES:

1. TERMINALS: SILVER-PALLADIUM THICK FILM PRINTED AND FIRED ON CERAMIC BODY TO BE FREE OF EPOXY AND OTHER FOREIGN MATERIAL.
2. SOLDER ADHERANCE: EACH PAD PER MIL-STD-202E, METHOD 208C.
3. TAPE AND REEL AS PER EIA STANDARD 481-1, WITH CATHODE TOWARD SPROCKET.
4. 180 mm DIA. REEL, 8 mm TAPE, 3000/REEL. PACKAGING TO DISPLAY DIALIGHT LABEL WITH DATE CODE, QTY, & P/N. PARTS POSITIONED WITH 4 mm PITCH ON REELS.
6. DIALIGHT PART NUMBER: 597-3001-107, 597-3211-107, 597-3301-107, 597-3401-107.

ABSOLUTE MAXIMUM RATING AT 25°C AMBIENT	597-XXXX-107				UNITS
	3001	3211	3301	3401	
	RED	AMBER	GREEN	YELLOW	
POWER DISSIPATION	65	80	65	70	mW
CONTINUOUS FORWARD CURRENT	25				mA
PEAK FORWARD CURRENT (10% DUTY CYCLE T _w = 1 msec)	100				mA
DERATE LINEAR FROM 25 °C	.33				mA/°C
REVERSE VOLTAGE	4				V
OPERATING TEMPERATURE	-30 TO +75				°C
STORAGE TEMPERATURE	-30 TO +85				°C
REFLOW SOLDERING TEMPERATURE (@ < 10 SEC)	240 TO 260				°C
IRON SOLDERING TEMPERATURE (@ < 10 SEC)	280 TO 320				°C



THIS DRAWING AND THE CONTENTS HEREIN ARE CONFIDENTIAL AND THE SOLE PROPERTY OF DIALIGHT. REPRODUCTION OF THIS DRAWING OR CONSTRUCTION OF ANY PARTS WITHIN THIS DRAWING ARE FORBIDDEN WITHOUT THE WRITTEN CONSENT OF DIALIGHT.		
SCALE: DRAWING SCALE ALL DIM'S IN: INCHES (MM)	DRAWING NUMBER C-15880	REV A
TOLERANCES: UNLESS OTHERWISE SPECIFIED FRACTIONS: ±1/64 DECIMALS (.XX): ±.01 DECIMALS (.XXX): ±.005 DECIMALS (.XXXX): ±.0005 ANGLES: ±1°	TITLE SMT LED	
FINISH:	MATERIAL	
FSCM 83330	Dialight	1501 ROUTE 34 SOUTH FARMINGDALE, NJ 07727
	SHEET OF	FAMILY TABLE: