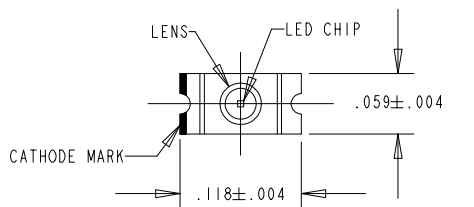


OPERATING CHARACTERISTICS AT 25 °C AMBIENT

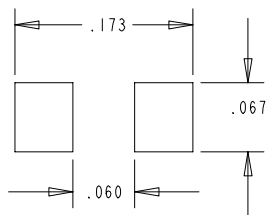
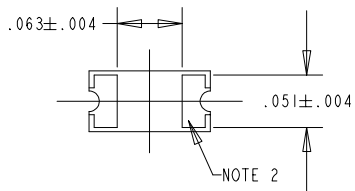
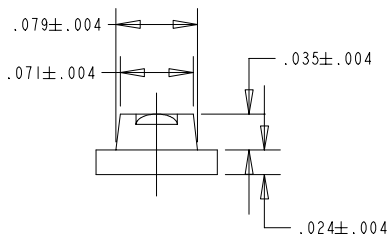
DIALIGHT P/N	COLOR	LENS COLOR	I <sub>F</sub> (mA)	FORWARD VOLTAGE (V)		LUMINOUS INTENSITY (mcd)			PEAK WAVELENGTH (nm)	DOMINANT WAVELENGTH (nm)			REVERSE CURRENT (μA) (V <sub>R</sub> = 4 V)	VIEWING ANGLE (2θ 1/2)	REVISIONS			
				TYP.	MAX.	MIN.	TYP.	MAX.		MIN.	TYP.	MAX.			MAX.	REV.	ECN.	DRN.
				597-3311-402	GREEN	WATER CLEAR	20	2.1		2.5	6.0	12.0	18.0		560	560	567	575
597-3311-407	GREEN	WATER CLEAR	20	2.1	2.5	6.0	12.0	18.0	560	560	567	575	100	70	D	---	YIS	2-19-03

REV.	ECN NO.	REVISIONS	DRN.	CKD.	APP.	DATE
A	---	NEW RELEASE	MC		HG	4-22-94
B	---	ADDED NOTES 6 AND 7.	TC	DC	NO	6-9-99
C	---	UPDATED LED SPEC.	YIS			



NOTES:

1. DIE: GaP (GREEN LED).
2. SOLDER PADS TO BE GOLD PLATED.
3. SUFFIX -402 FOR 20-PCS ON A SAMPLE TAPE STRIP.
4. SUFFIX -407 FOR 7" DIA. REEL, .312" WIDE TAPE, PACKAGED 2500-PCS PER REEL WITH A PITCH OF .158".
5. DEVICES POSITIONED ON REEL WITH CATHODE SIDE TOWARDS SPROCKET.
6. TAPE AND REEL LEDS MAY REQUIRE RE-TAPING AFTER TWELVE MONTHS.
7. DIALIGHT PART NUMBER: 597-3311-402 & 597-3311-407.



RECOMMENDED SOLDER PAD LAYOUT

ABSOLUTE MAXIMUM RATING AT 25°C AMBIENT	GREEN	UNITS
POWER DISSIPATION	75	mW
CONTINUOUS FORWARD CURRENT	30	mA
PEAK FORWARD CURRENT	70	mA
DERATE LINEAR FROM 25 °C	.42	mA/°C
PEAK REVERSE VOLTAGE ( I <sub>R</sub> = 100 μA)	4	V
OPERATING TEMPERATURE	-30 TO +85	°C
STORAGE TEMPERATURE	-40 TO +100	°C

THIS DRAWING AND THE CONTENTS HEREIN ARE CONFIDENTIAL AND THE SOLE PROPERTY OF DIALIGHT. REPRODUCTION OF THIS DRAWING OR CONSTRUCTION OF ANY PARTS WITHIN THIS DRAWING ARE FORBIDDEN WITHOUT THE WRITTEN CONSENT OF DIALIGHT.

SCALE 8:1	DRAWING NUMBER	REV
ALL DIM'S IN: INCHES (MM)	C-15874	C
TOLERANCES: UNLESS OTHERWISE SPECIFIED	TITLE GREEN SMT LED	
FRACTIONS: ±1/64	MATERIAL	
DECIMALS (.XX): ±.020	Dialight	
DECIMALS (.XXX): ±.015	1501 ROUTE 34 SOUTH FARMINGDALE, NJ 07727	
ANGLES: ±1°	SHEET OF FAMILY TABLE:	
FINISH:	FSCM 83330	